



November 30, 2015

**Effective December 7, 2015: New Access Route to YB's Back Gate
(Sometimes called the Auiki Street Gate or Libby Street Gate)**

Dear Valued Customer:

The State Department of Transportation, Harbors Division, and Young Brothers will be implementing a plan to alleviate traffic congestion on Auiki and Libby Streets by redirecting trucker traffic bound for Young Brothers' back gate away from Auiki and Libby Streets.

Effective Monday, December 7, 2015, truckers may access Young Brothers' back gate only via Road 2 (as shown on the attached map) located on the former Kapalama Military Reservation or "KMR" property. Truckers will not be allowed access to Young Brothers' back gate via Auiki Street or Libby Street. Road 2 will be their exclusive route to and a queuing area for entry through Young Brothers' back gate.

New directional arrows, painted on both Auiki and Libby Streets by the City and County of Honolulu, will prohibit all drivers from entering the Young Brothers facility from either Auiki or Libby Streets. Beginning on December 7, 2015, and through the transition period, a Honolulu Police Department officer will be stationed at the intersection of Auiki and Libby Streets to direct traffic and maintain the new traffic flow.

As shown on the attached map, beginning on December 7, 2015, truckers may access Road 2 via Sand Island Access Road and then travel east to Young Brothers' back gate. Entry to Road 2 at Sand Island Access Road is gated. **This Road 2 security gate will be open from Monday through Friday during the hours of 6:00 a.m. to 4:00 p.m.**

Young Brothers' back gate will be accessible only by truckers tendering straight load container shipments. **YB's back gate will be open only during the following hours:**

- 6:30 a.m. to 3:30 p.m. on Mondays and Thursdays
- 7:00 a.m. to 11:30 a.m. on Tuesdays and Fridays
- 7:00 a.m. to 3:30 p.m. on Wednesdays

There are no changes to the operation of Young Brothers' main gate at Nimitz Highway.

Thank you for your patience and understanding.

Sincerely,

/s/ Roy Catalani

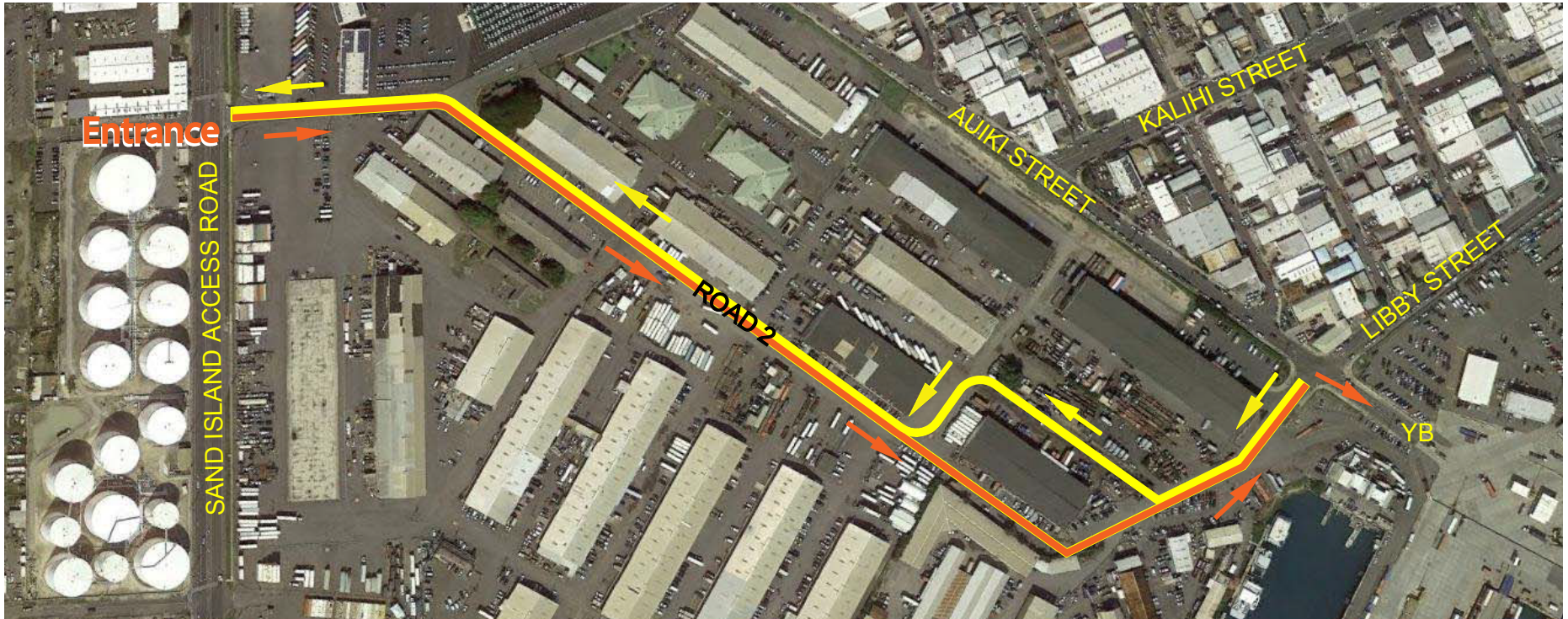
Roy Catalani
Vice President

Strategic Initiatives and External Affairs

PO.Box 3288 • Honolulu, HI 96801-3288 • Phone: (808) 543-9311 • www.youngbrothershawaii.com

An independent subsidiary of Foss Maritime Company

Map of Traffic Pattern for Road No. 2 Effective Monday, December 7, 2015



Young Brothers, Limited
P.O. Box 3288
Honolulu, HI 96801-3288
Phone: (808) 543-9311
www.youngbrothershawaii.com



An Independent Subsidiary of Foss Maritime Company